



28th October

$$\frac{1}{8} \div 4$$

$$\frac{1}{8} \times \frac{1}{4} =$$

$$\frac{1}{32}$$

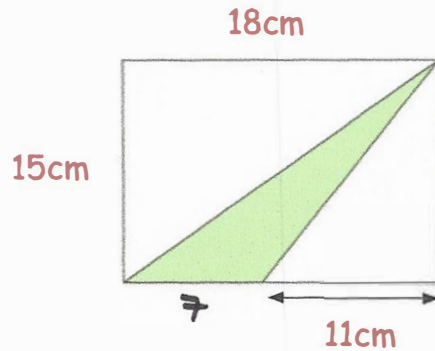
$$-60 + 125$$

$$65$$

Find the shaded area

$$A = \frac{1}{2} \times 7 \times 15$$

$$= \underline{\underline{52.5\text{cm}^2}}$$



Work out the value of x

$$5x + 20 = 35$$

$$\underline{\underline{x = 3}}$$

$$35 - 20 = 15$$

$$15 \div 5 = 3$$

Convert 3.5 kilometres into millimetres

$$\underline{\underline{3,500,000\text{ mm}}}$$

$$3.5\text{ km} = 3500\text{ m}$$

$$= 350000\text{ cm}$$

$$= 3,500,000$$