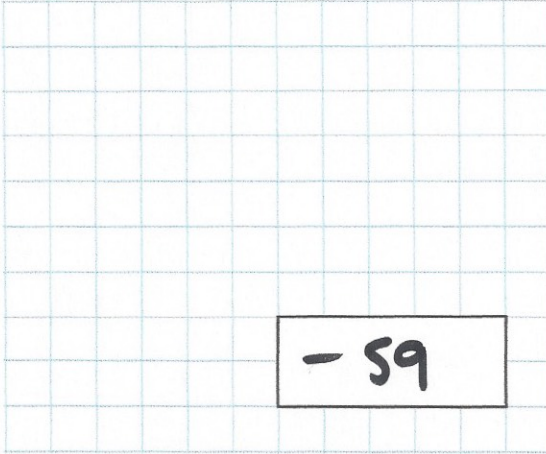




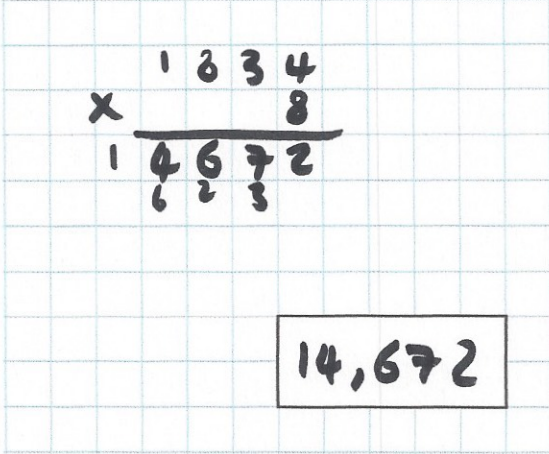
25th February

$$41 - 100$$



-59

$$1,834 \times 8$$



14,672

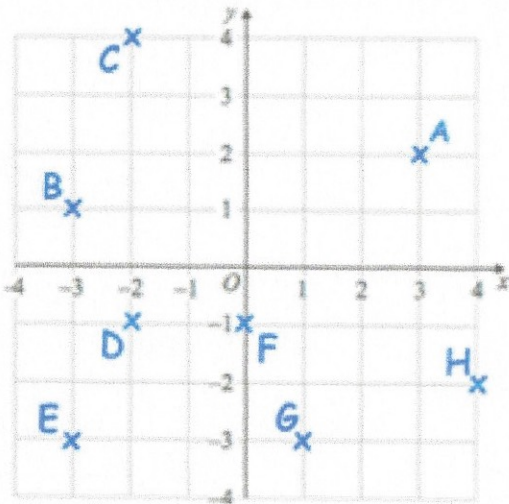
Tom has 26 sweets.

He shares them equally between his friends.

Tom has more than 10 friends

Write down how many friends Tom might have.

either 13 or 26



Write down the coordinates of the point B

(-3, 1)

Write down the coordinates of the point G

(1, -3)