

Name: Answer

Primary 5-a-day

Gold



9th May

$$5^2 = 25$$

2

$$\frac{7}{8} - \frac{1}{2}$$

$$\frac{7}{8} - \frac{4}{8} = \frac{3}{8}$$

$\frac{3}{8}$

Ava bought three cups of tea.

She pays with a £20 note.
Her change is £16.22

What is the cost of **four** cups of tea?

£5.04

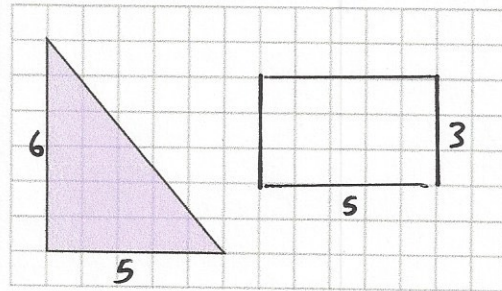
$$20 - 16.22 = \pounds 3.78$$

$$3.78 \div 3 = \pounds 1.26 \text{ (1 cup)}$$

$$\pounds 1.26 \times 4 = \pounds 5.04$$

Draw a rectangle on the grid with the same area as the triangle

$$\text{area} = \frac{6 \times 5}{2} = 15 \text{ cm}^2$$



The factors of 17 have a sum of 18.

Find the other number whose factors have a sum of 18.

10

(10 has factors 1, 2, 5 and 10)