



13th July

$$35\% = \frac{7}{20}$$

$$\frac{35}{100} = \frac{7}{20}$$

$$\frac{7}{20}$$

$$90 - 240$$

$$-150$$

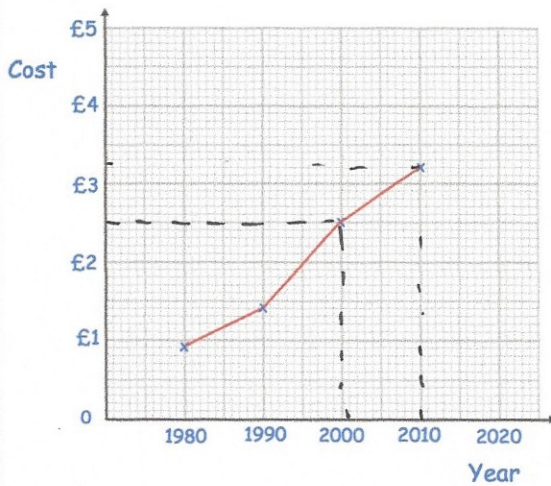
Work out the value of y

$$4y - 7 = 2y + 15$$

$$2y = 22$$

$$y = 11$$

The line graph below shows the cost of a coffee in a shop over 30 years.



In which year was the price £2.50

2000

Estimate the price of a coffee in 2010.

£3.30