



25th March

$$4.86 \div 6$$

$$\begin{array}{r} 0.81 \\ 6 \overline{) 4.86} \end{array}$$

0.81

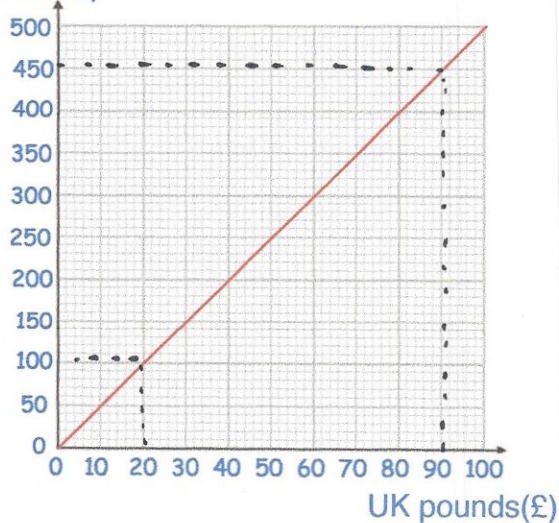
$$\frac{7}{9} \times \frac{2}{3}$$

$$= \frac{14}{27}$$

$\frac{14}{27}$

This graph helps change UK pounds into Polish zloty

Polish zloty



Change £20 into Polish zloty

100 zloty

Change 450 zloty into UK pounds.

£90

Kelsey says that she has drawn a triangle where "two of the three angles are obtuse."

Explain why Kelsey must be incorrect.

Two obtuse angles will add up to more than 180° , since each is greater than 90°