



4th March

$$2\frac{1}{4} + \frac{7}{8}$$

$$2\frac{2}{8} + \frac{7}{8} = 2 + \frac{9}{8}$$

$$3\frac{1}{8}$$

45% of 720

$$50\% - 360$$

$$5\% - 36$$

$$360 - 36 =$$

$$324$$

Circle any fraction that is greater than

$\frac{1}{3}$ but less than

$\frac{1}{2}$

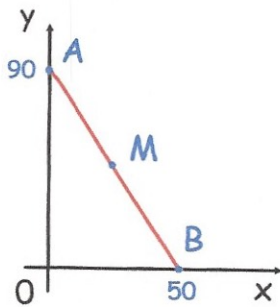
$\frac{4}{9}$

$\frac{3}{5}$

$\frac{13}{20}$

$\frac{5}{8}$

$\frac{7}{10}$



In this diagram M is an equal distance from A and B.

What are the coordinates of M?

$(25, 45)$

Owen has 3 marbles more than Mia
Mia has 6 marbles more than Carl.

Altogether they have 30 marbles.

How many marbles does each child have?

Carl $\boxed{5}$ Owen $\boxed{14}$ Mia $\boxed{11}$