



13th February

$$2.53 \times 6$$

$$\begin{array}{r} 2.53 \\ \times \quad 6 \\ \hline 15.18 \end{array}$$

15.18

$$4.32 \div 3$$

$$\begin{array}{r} 1.44 \\ 3 \overline{) 4.32} \\ \underline{3} \\ 13 \\ \underline{12} \\ 12 \\ \underline{12} \\ 0 \end{array}$$

1.44

Write down the value of the **8** in the answer to

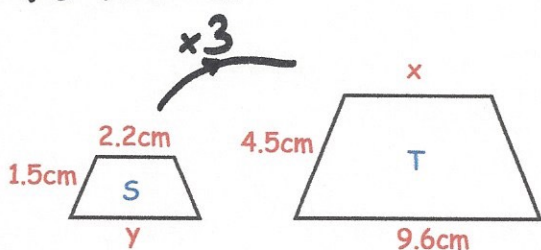
$$1,470 \times 2,000 = 2,940,000$$

$$\begin{array}{r} 147 \\ \times 2 \\ \hline 294 \end{array}$$

Nine hundred thousand

Trapezium S and trapezium T are similar

$$4.5 \div 1.5 = 3$$



Find the size of x

$$x = 2.2 \times 3 = \underline{6.6 \text{ cm}}$$

Find the size of y

$$y = 9.6 \div 3 = \underline{3.2 \text{ cm}}$$