

Name: _____

Primary 5-a-day

Silver



7th August

$$\frac{4}{5} - \frac{2}{5}$$

$$\frac{2}{5}$$

$$4 \times 9 \times 10 \times 10$$

$$3600$$

6 years = months

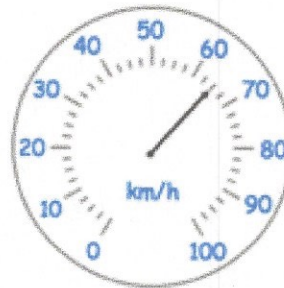
48 hours = days

91 days = weeks

The speed limit is 90 kilometres per hour.

How many kilometres per hour slower than the speed limit is the car travelling?

$$\begin{array}{r} 90 \\ - 65 \\ \hline 25 \end{array}$$



Georgina uses these digit cards

She multiplies them together

Her answer is a **multiple of 4**

What could Georgina's multiplication be?

$$\boxed{3} \times \boxed{7} \boxed{6}$$