

Name: Ansod

Primary 5-a-day

Silver



18th February

$$\frac{4}{5} - \frac{1}{5}$$

$$\frac{3}{5}$$

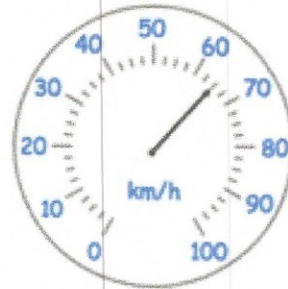
$$4 \times 7 \times 10 \times 10$$

$$2800$$

The speed limit is 80 kilometres per hour.

How many kilometres per hour slower than the speed limit is the car travelling?

$$80 - 65 = \underline{15 \text{ kph}}$$



Georgina uses these digit cards

6 7 3

She multiplies them together

Her answer is a **multiple of 4**

What could Georgina's multiplication be?

$$3 \times 76$$

A group of friends earn £90 by singing.

They share the money **equally**

They get £18 each

How many friends are in the group?

$$90 \div 18 = \underline{5}$$