

Name: Answers

Primary 5-a-day

Silver



9th February

$$1 \times 2 \times 3 \times 4 \times 5 \times 6$$

$$6 \times 5 = 30$$

$$\times 4 = 120$$

$$\times 3 = 360$$

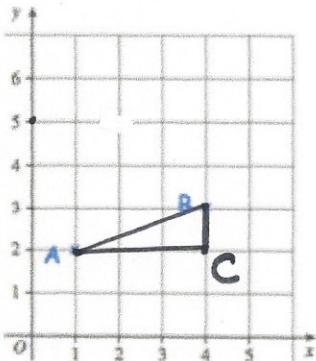
$$\times 2 = 720$$

$$\times 1 = 720$$

720

$$4,000 \div 100$$

40



Write down the coordinates of the point A

(1, 2)

ABC is a right-angle triangle.

Write down what the coordinates of point C could be.

(4, 1) (could also be)
(0, 5)

The temperature in Derby is 4°C .

The temperature in Glasgow is 6°C colder.

What is the temperature in Glasgow?

$$4 - 6 = \underline{\underline{-2^{\circ}\text{C}}}$$