



12th February

43×80

Handwritten multiplication on a grid:

```

      43
    × 80
    ----
     00
    3440
     2
    
```

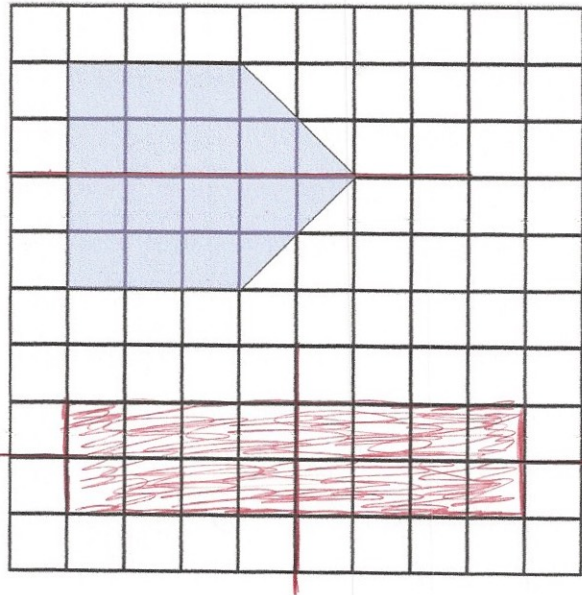
Answer box: 3440

25% of 300

Answer box: 75

On the grid, draw a **rectangle** which has the **same area** as the pentagon

16 squares



Draw any lines of symmetry on the **pentagon** and the **rectangle**

In Victoria's class, there are 30 students

Explain why Victoria must be wrong

$\frac{2}{7}$ of 30 is a decimal

Exactly $\frac{2}{7}$ of the students in the class wear glasses.