



21st May

55% of 840

$$\begin{aligned} 50\% &= 420 \\ 5\% &= 42 \end{aligned}$$

462

 $130 - 15 \times 5$

$$130 - 75$$

55

Michael runs one kilometre at a speed of 5 metres per second.

How long does it take Michael?

Give your answer in minutes and seconds.

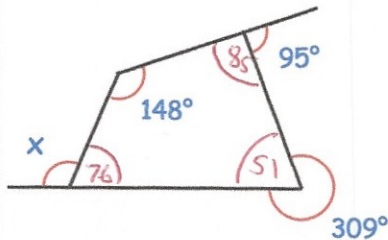
$$\frac{1000 \text{ m}}{5} = 200 \text{ s}$$



3 mins 20 secs

Work out the size of angle x

$$\begin{aligned} 180 - 76 &= 104 \\ x &= 104 \end{aligned}$$



The length of this rectangle is twice its width.

The area of the rectangle is 162 cm^2

Work out the length of the rectangle

18cm

