



6th May

$$1\frac{1}{5} - \frac{1}{2}$$

$$\frac{6}{5} - \frac{1}{2} = \frac{12}{10} - \frac{5}{10}$$

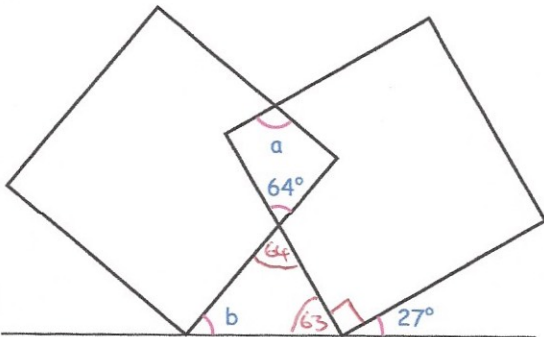
$$\frac{7}{10}$$

$$\frac{3}{5} \times 290$$

$$290 \div 5 = 58$$

$$58 \times 3 = 174$$

$$174$$



This diagram shows a straight line and two overlapping squares.

Find the size of angle a

$$90 + 90 + 64 = 244$$

$$360 - 244 = 116$$

$$a = 116$$

Find the size of angle b

$$63 + 64 = 127$$

$$180 - 127 = 53$$

Charles Dickens was born in the year 1812.

Write 1812 in Roman numerals

MDCCLXII

