



22nd February

$$\frac{5}{8} - \frac{1}{3}$$

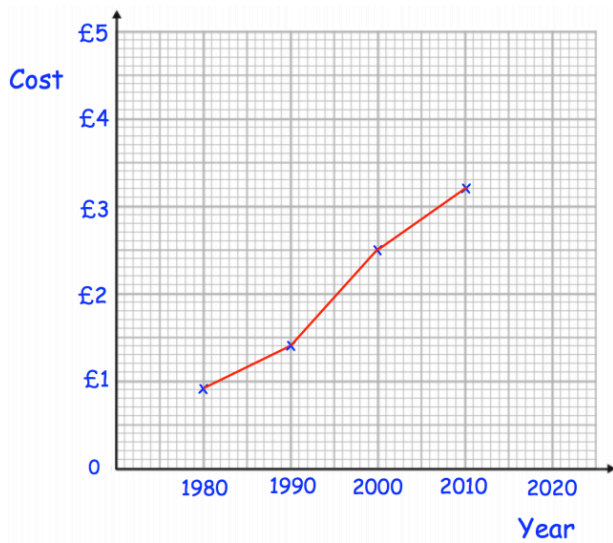
40% of 70

A 20x10 grid for working out the subtraction of $\frac{1}{3}$ from $\frac{5}{8}$. A rectangular box is provided at the bottom right for the final answer.

A 20x10 grid for working out 40% of 70. A rectangular box is provided at the bottom right for the final answer.

Write 0.375 as a fraction.
Give your answer in its simplest form.

The line graph below shows the cost of a coffee in a shop over 30 years.



In which year was the price £2.50

Estimate the price of a coffee in 2010.