



1st September

$$\frac{5}{9} \times \frac{1}{4}$$

$$\frac{5}{36}$$

$$521 \times 128$$

$$\begin{array}{r} 521 \\ \times 128 \\ \hline 4168 \\ 10420 \\ \hline 52100 \\ 66688 \end{array}$$

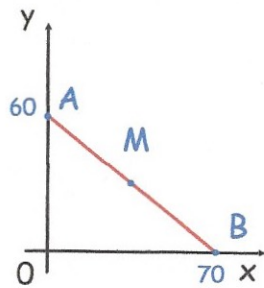
$$66688$$

Circle any fraction that is greater than

$$\frac{1}{2} \text{ but less than } \frac{1}{3}$$

This doesn't make sense

$$\frac{4}{9} \quad \frac{3}{5} \quad \frac{13}{20} \quad \frac{5}{8} \quad \frac{7}{10}$$



In this diagram M is an equal distance from A and B.

What are the coordinates of M?

$$(35, 30)$$

A 10p coin has a diameter of 24.5mm

Caitlyn makes a straight line of 10p coins worth £20



How long is the line?

Give your answer in metres.

$$2000 \div 10 = 200$$

$$\begin{aligned} 200 \times 24.5 &= 4900 \text{ mm} \\ &= 490 \text{ cm} \\ &= \underline{4.9 \text{ m}} \end{aligned}$$