



13th September

$$1\frac{9}{10} - 1\frac{1}{8}$$

$$\frac{19}{10} - \frac{9}{8}$$

$$\frac{76}{40} - \frac{45}{40}$$

$$\frac{31}{40}$$

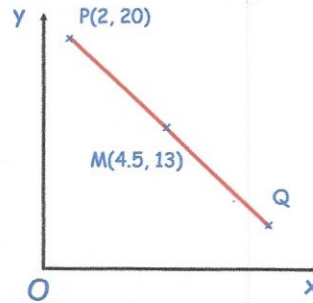
$$\frac{1}{3} = \boxed{33.\dot{3}\%}$$

$$\boxed{\%}$$

M is the midpoint of the line PQ.

Find the coordinates of Q.

$$(7, 6)$$



Katie chooses a prime number. She multiplies it by 200 and then rounds it to the nearest thousand.

Her answer is 3,000.

Write down all the possible square numbers Katie could have chosen.

$$13, 17$$

Shown is a square and an isosceles triangle on a straight line.

Find x

$$90 + 51 = 141$$

$$39 + 39 = 78$$

$$180 - 78 = \underline{102}$$

