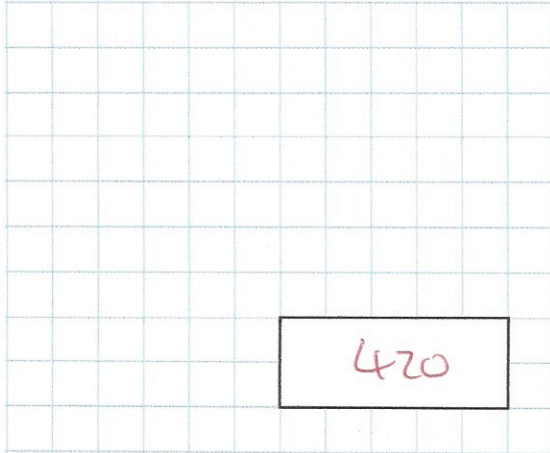




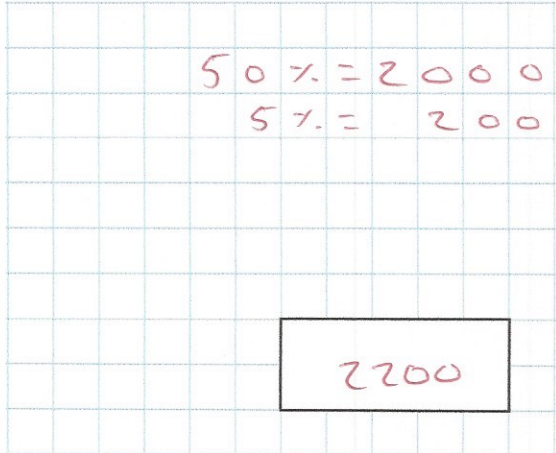
6th September

$$0.7 \times 600$$



420

$$55\% \times 4,000$$



$$50\% = 2000$$

$$5\% = 200$$

2200



The End
MMIX

At the end of a film, the year is given in Roman numerals.

Write the year MMIX in figures

2009

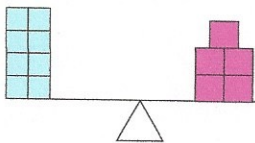
$$w = 12$$

Work out $4w - 8$

40

$$4 \times 12 = 48$$

$$48 - 8 = 40$$



8 small blocks have the same mass as 5 large blocks.

The mass of one small block is 4.5kg

Find the mass of one large block

$$8 \times 4.5 = 36$$

$$36 \div 5 = 7.2$$

7.2kg