



8th September

$$\begin{array}{r} 0111 \\ 15 \overline{) 1665} \end{array}$$

111

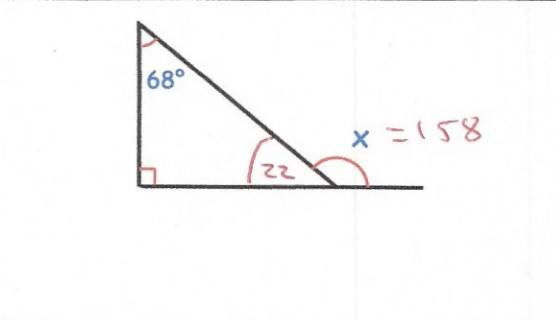
$$\frac{3}{4} + 1\frac{1}{9}$$

$$\frac{3}{4} + \frac{10}{9} = \frac{27}{36} + \frac{40}{36} = \frac{67}{36}$$

$\frac{67}{36} = 1\frac{31}{36}$

Find the size of the angle labeled x

$180 - 22 = 158$



Lindsey is planting daffodil bulbs

For every 5 bulbs Lindsey planted, only 3 bulbs grew into daffodils

Altogether 60 daffodils grew

How many bulbs did Lindsey plant?

$60 \div 3 = 20$

$20 \times 5 = \underline{100}$

The numbers in this sequence increase by the same amount each time.

Write the missing numbers

$\frac{5}{8}$
1
 $1\frac{3}{8}$
 $1\frac{3}{4}$
 $2\frac{1}{8}$