

Name: _____

Primary 5-a-day

Silver



8th September

$\frac{1}{6}$ of 720

$$\begin{array}{r} 120 \\ 6 \overline{) 720} \end{array}$$

120

$3,400 + 7,700$

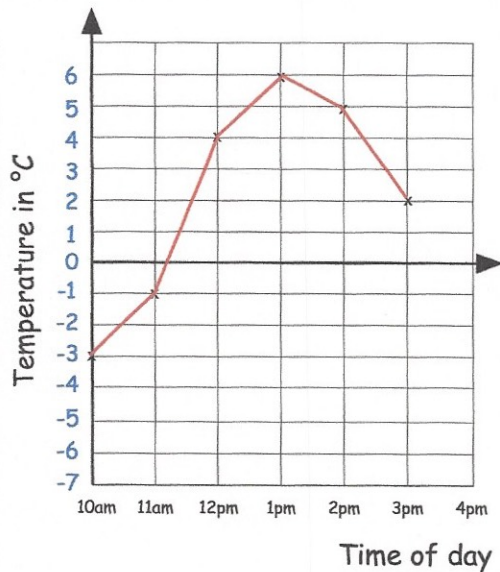
$$\begin{array}{r} 3400 \\ 7700 \\ \hline 11100 \end{array}$$

11100

Draw an acute angle



Draw an obtuse angle



How many degrees **warmer** was it at 2pm than at 11am?

6°C

At 4pm the temperature was 3 degrees lower than at 3pm.

What was the temperature at 4pm?

-1°C