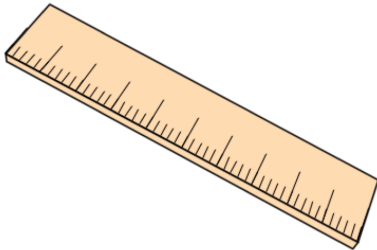


Primary Practice Questions



Corbettmaths



Line Graphs



Tips

- Read each question carefully
- Attempt every question.
- Check your answers seem right.
- Always show your workings

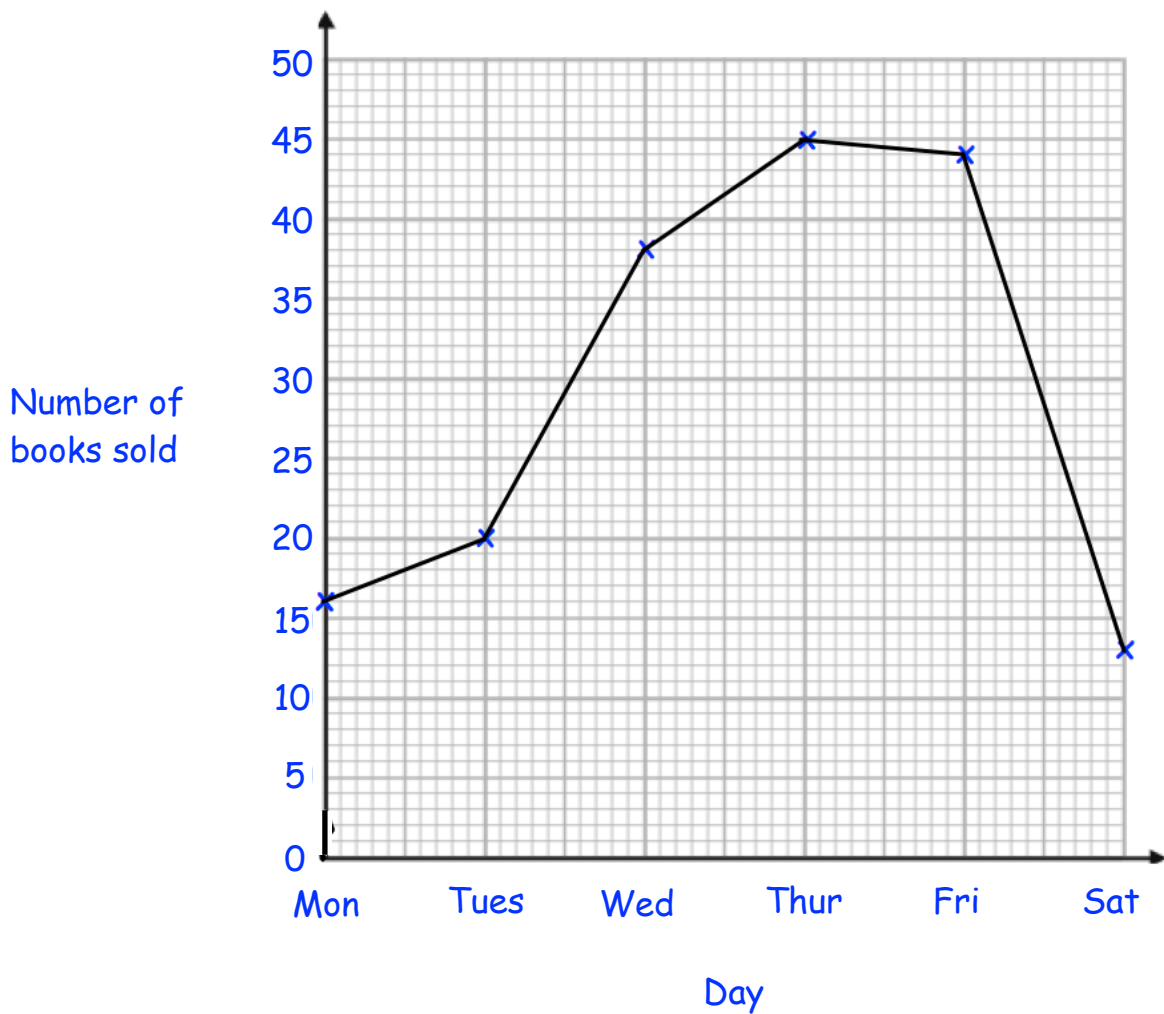
Recap



Remember

- There are daily questions found at
www.ccorbettmathsprimary.com/5-a-day/

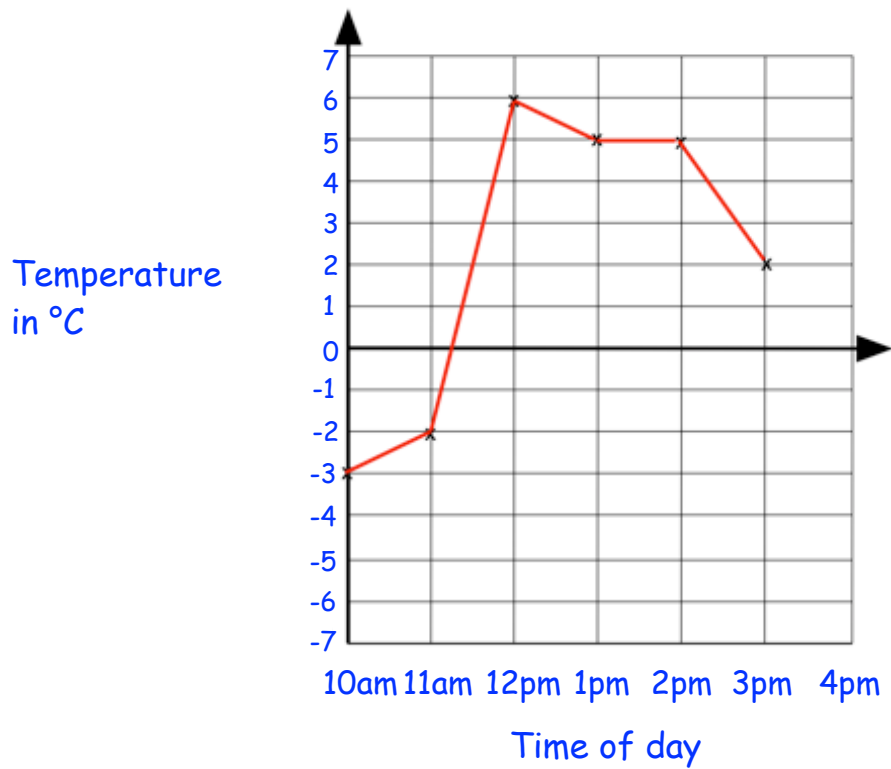
1. The graphs shows how many books were sold in a shop.



On which day did the shop sell the most books?

How many books were sold on Tuesday?

2. This graph shows the temperature in °C on a cold day.

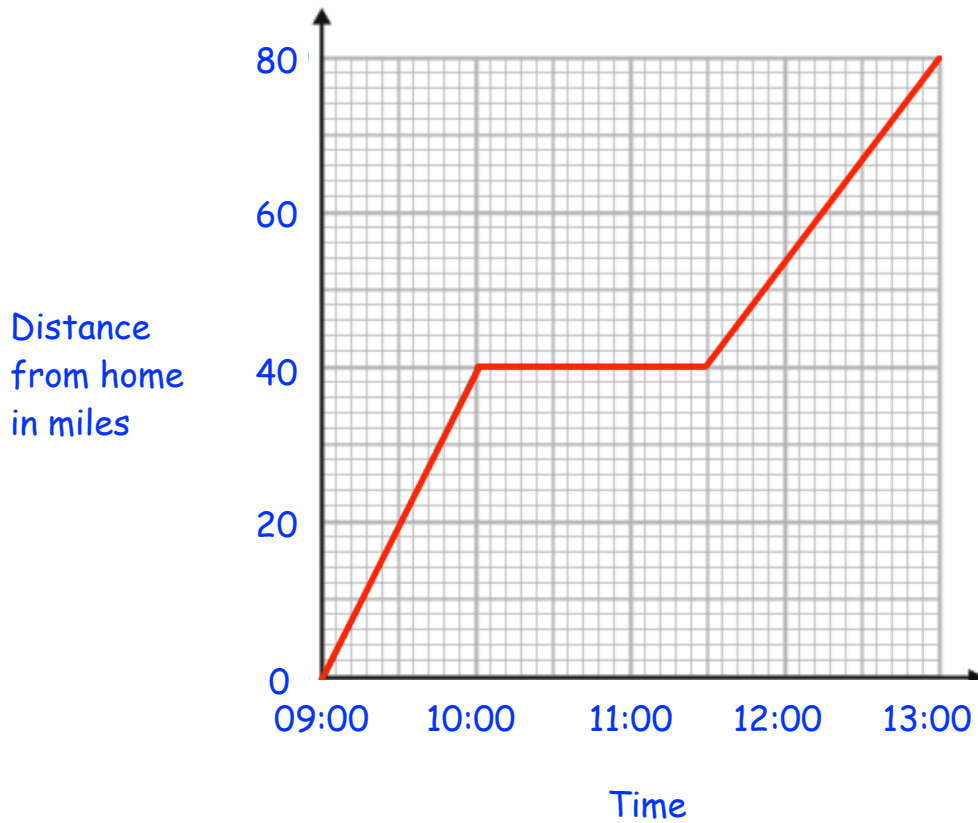


How many degrees **warmer** was it at 2pm than 11am?

At 4pm the temperature was 3 degrees lower than at 3pm

What was the temperature at 4pm?

3. Natalie travels from her home to London.



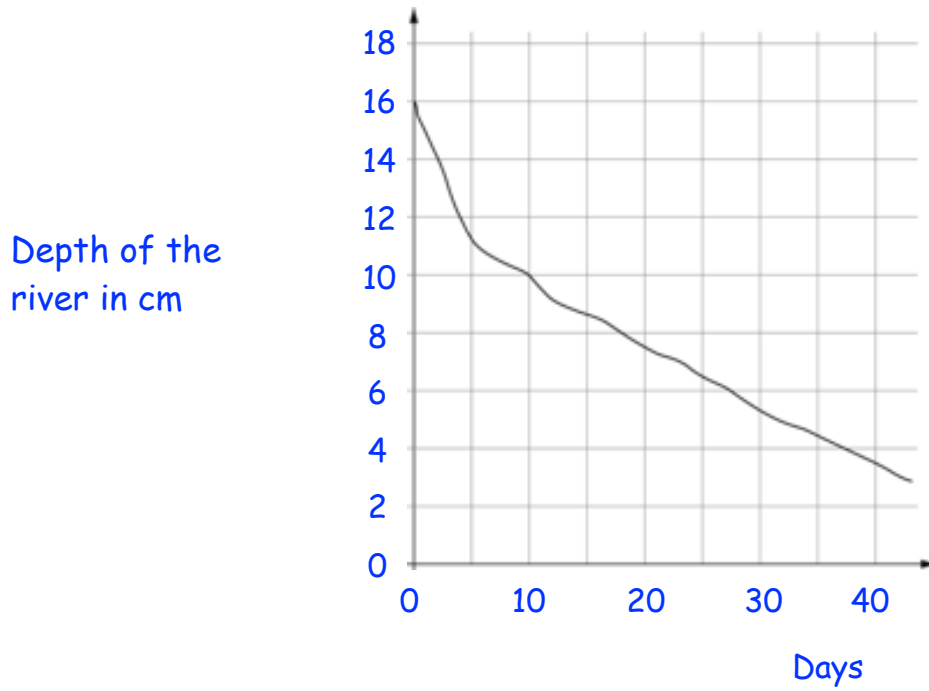
She stopped and visited her friend Edward on the way.

How far was Natalie from home when she visited Edward?

miles

How long did Natalie stop for?

4. This graph shows the depth of a river during the summer.



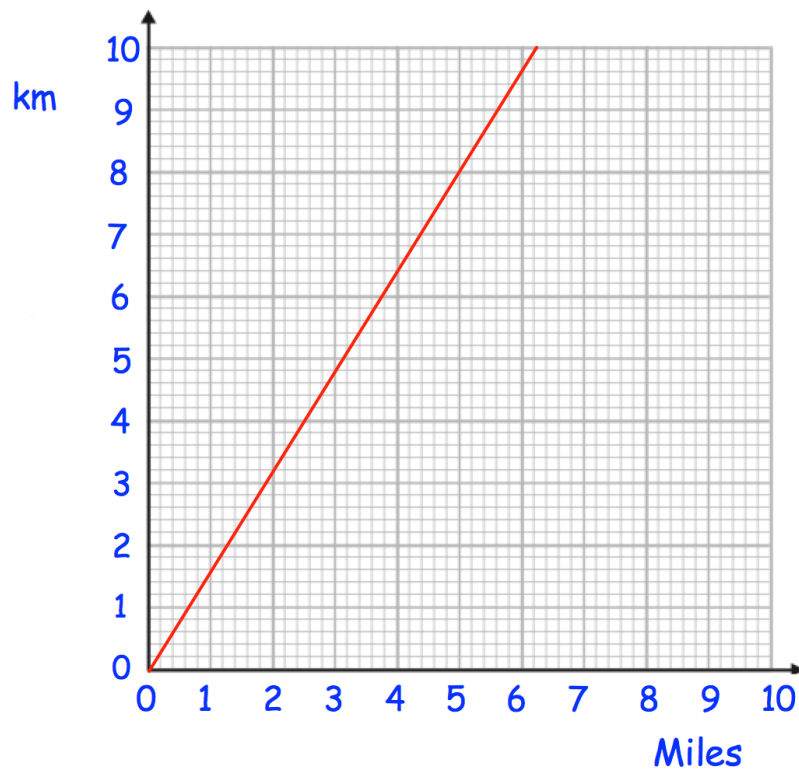
What was the depth of the river after 10 days?

cm

How long did it take the river to go from a depth of 16cm to 11cm?

days

5. This graph can be used to change between miles and kilometres



Change 5 miles into kilometres

km

Change 10 miles into kilometres

km