



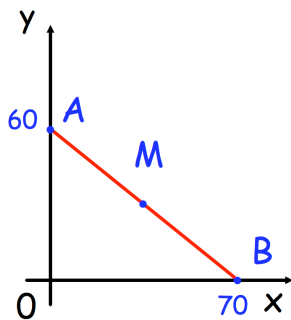
1st September

$$\frac{5}{9} \times \frac{1}{4}$$

$$521 \times 128$$

Circle any fraction that is greater than $\frac{1}{2}$ but less than $\frac{1}{3}$

- $\frac{4}{9}$ $\frac{3}{5}$ $\frac{13}{20}$ $\frac{5}{8}$ $\frac{7}{10}$



In this diagram M is an equal distance from A and B.

What are the coordinates of M?

A 10p coin has a diameter of 24.5mm
Caitlyn makes a straight line of 10p coins worth £20



How long is the line?
Give your answer in metres.