



1st May

7×12

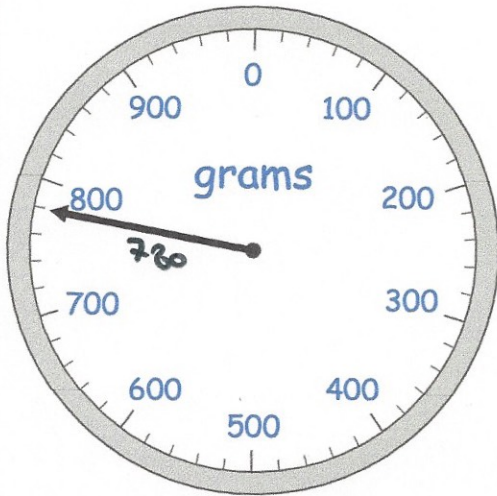
84

$1,841 - 227$

$$\begin{array}{r} 3 \\ 1841 \\ - 227 \\ \hline 1614 \end{array}$$

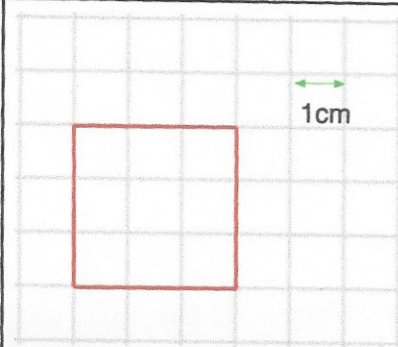
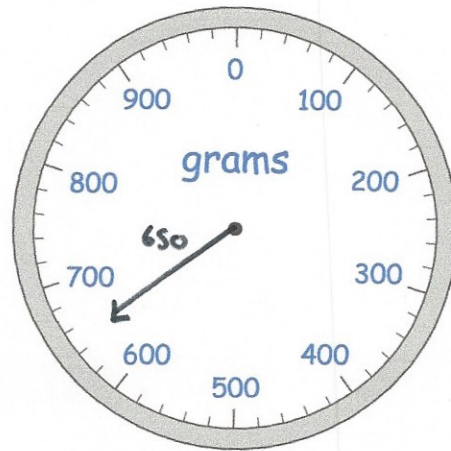
1614

Steven places some oranges on a weighing scale.



He takes away one orange. The mass goes down by 130 grams.

Draw the pointer in its new position



Write down the area of the square

9cm²