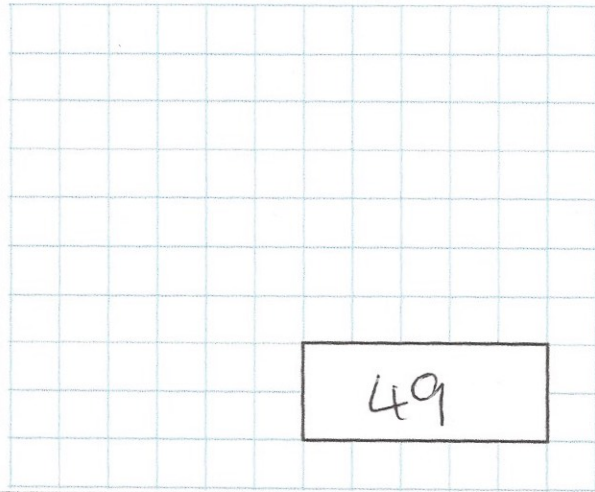




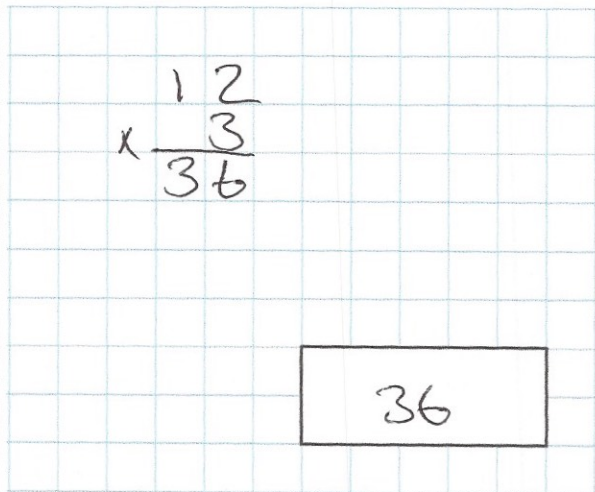
4th October

7×7



49

$\frac{1}{3}$ of 36 = 12



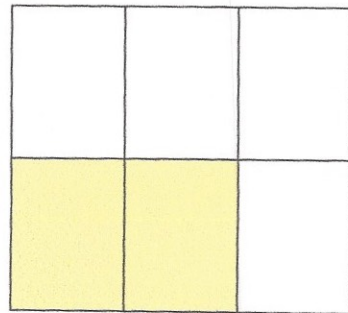
$$\begin{array}{r} 12 \\ \times 3 \\ \hline 36 \end{array}$$

36

What fraction of the shape is shaded?

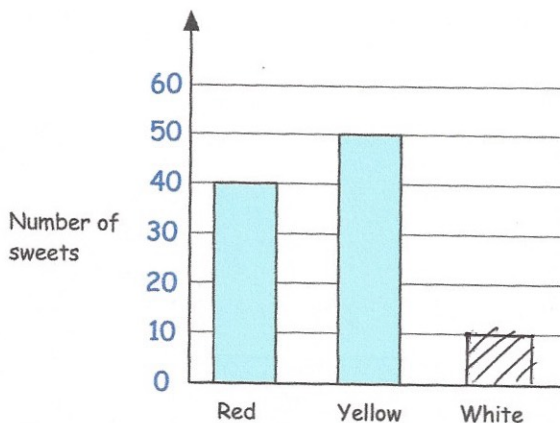
2 out of 6 shaded

$\frac{2}{6} \rightarrow \frac{1}{3}$



There are 100 sweets in a bag.

The sweets are red, yellow or white.



How many white sweets are there in the bag?

Red = 40
Yellow = 50

$$\begin{array}{r} 50 \\ + 40 \\ \hline 90 \end{array}$$

10 white sweets

Complete the bar chart