



1st April

$\square^2 = 49$

7

$1,944 \div 9$

$$\begin{array}{r} 0216 \\ 9 \overline{) 1944} \\ \underline{9} \phantom{44} \\ 0 \phantom{44} \\ \underline{0} \phantom{44} \\ 0 \phantom{44} \\ \underline{0} \phantom{44} \\ 0 \phantom{44} \end{array}$$

216

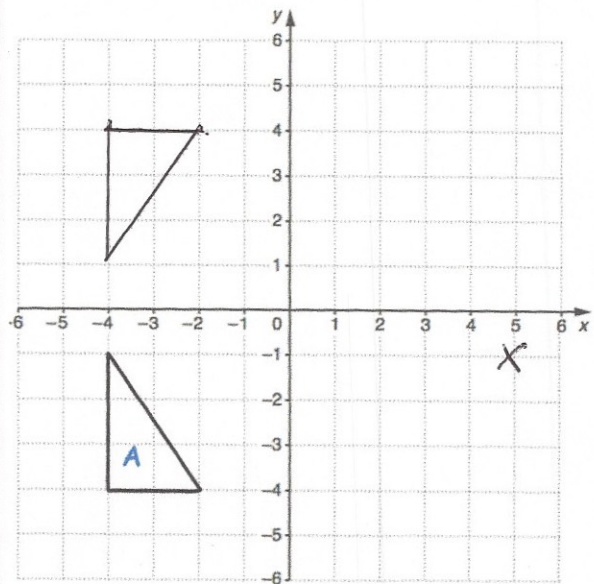
The lengths of time that it takes to complete a jigsaw are below.

- 0.5 hours   1.25 hours   100 minutes  
0.75 hours   40 minutes

Arrange the times in order, starting with the shortest.

- 0.5 hours  
40 minutes  
0.75 hours  
1.25 hours  
100 minutes

Reflect triangle A in the x-axis



Plot the point (5, -1)

X