

Name: Anwels

Primary 5-a-day

Silver



24th October

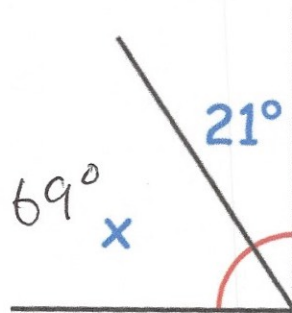
$$\frac{1}{5} + \frac{1}{5} + \frac{1}{5}$$

$$\frac{3}{5}$$

$$50 \times 100$$

$$5000$$

Find the size of angle x



List the first five multiples of 9

9, 18, 27, 36, 45

500 people went to a charity football match between Yeovil and Carlisle.

Adult tickets are £5. - £2000
Child tickets are £3. - £300

Out of the 500 people at the match, 100 are children.

How much money was raised for charity?

£2300