



21st November

$$\frac{3}{4} \times \frac{1}{2}$$

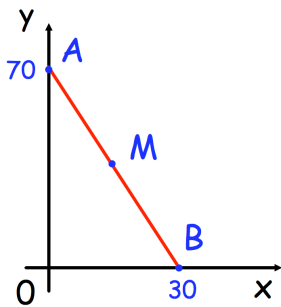
$$\frac{1}{3} = \boxed{\phantom{000}} \%$$

James says that a triangle is right angled.

Olivia says that the same triangle is isosceles.

They are both correct.

Explain how.



In this diagram M is an equal distance from A and B.

What are the coordinates of M?

Work out the perimeter of this rectangle

