

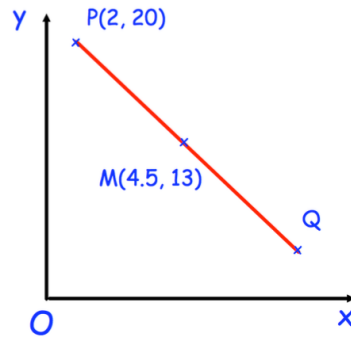


13th September

$$1\frac{9}{10} - 1\frac{1}{8}$$

$$\frac{1}{3} = \boxed{\phantom{000}} \%$$

M is the midpoint of the line PQ.  
Find the coordinates of Q.



Katie chooses a prime number.  
She multiplies it by 200 and then rounds it to the nearest thousand.  
Her answer is 3,000.  
Write down all the possible square numbers Katie could have chosen.

Shown is a square and an isosceles triangle on a straight line.  
Find x

