



5th January

= 2,300 + 900

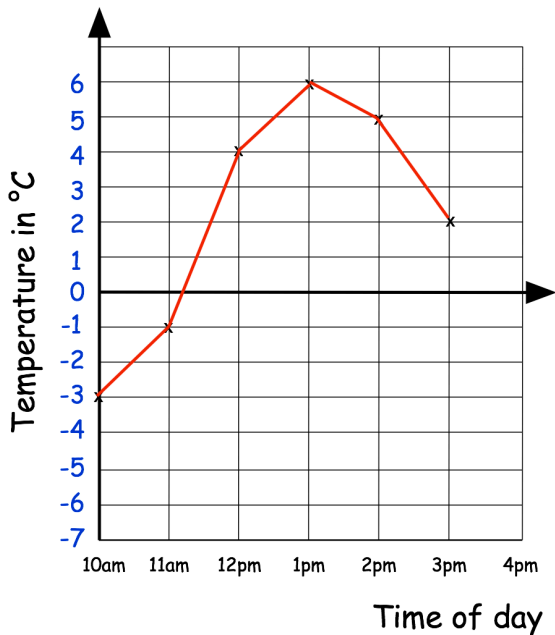
$9 \times 62$

Grid area for the first problem. Includes a small empty box at the bottom center.

Grid area for the second problem. Includes a small empty box at the bottom center.

A song lasts 3 minutes 37 seconds.  
How long does the song last in seconds?

Empty space for the student to write the answer to the song duration problem.



How many degrees **warmer** was it at 1pm than at 11am?

At 4pm the temperature was 5 degrees lower than at 3pm.

What was the temperature at 4pm?