



20th October

$$180 \times \frac{4}{5}$$

$$180 \div 5 = 36$$

$$\times 4$$

$$= 144$$

144

$$18 \overline{) 1638}$$

$$\underline{91}$$

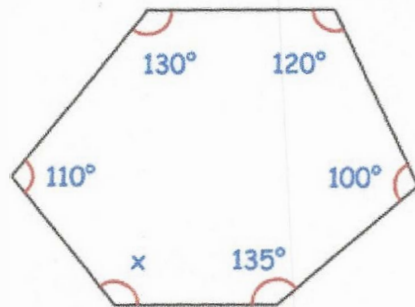
91

Find the size of angle x.

$$\text{total} = 720^\circ$$

$$x = 720 - 595$$

$$x = \underline{\underline{125^\circ}}$$



Burt is making cupcakes
He has made 400 cupcakes.
Burt places the cupcakes in boxes of 18.

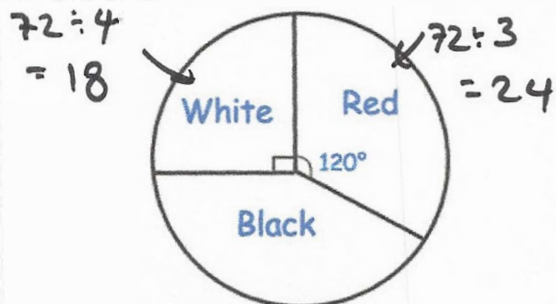


How many boxes can he fill?

$$400 \div 18 = 22 \text{ r } 4$$

22

The pie chart shows information about the 72 counters in a bag.



How many counters are black?

$$72 - (18 + 24) = \underline{\underline{30}}$$