

Name: Answers

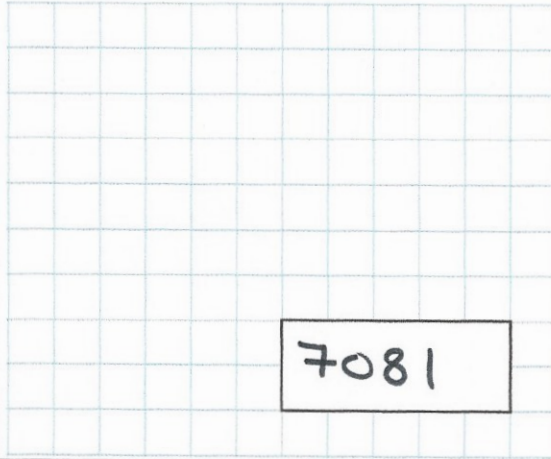
5-a-day

Silver



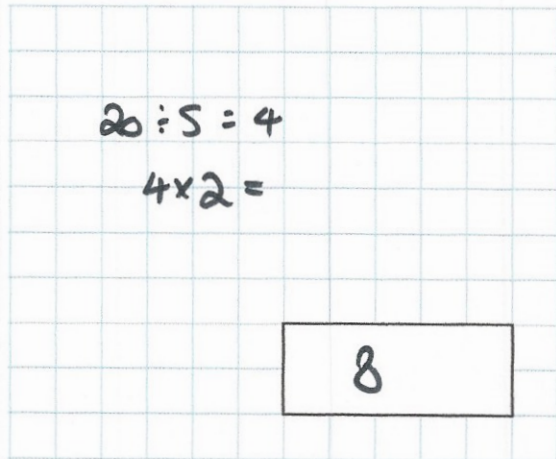
18th December

$6,781 + 300$



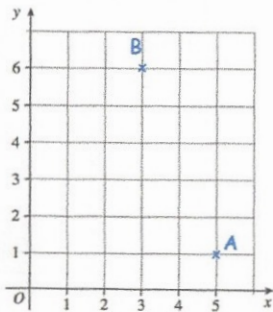
7081

$\frac{2}{5}$  of 20



$20 \div 5 = 4$   
 $4 \times 2 =$

8



Write down the coordinates of the point B

(3, 6)

These are the opening times at Coalville Library

Day	Opening Times
Monday	10am to 2pm
Tuesday to Thursday	9am to 12:30pm
Friday	11:30am to 1pm

How many hours is the library open on Monday?

4

How many hours is the library open each week?

$4 + 3\frac{1}{2} + 3\frac{1}{2} + 3\frac{1}{2} + 1\frac{1}{2}$   
 $= 16$