

Name: _____

5-a-day

Silver



6th September

$$505 + 2,757$$

$$\begin{array}{r} 2757 \\ + 505 \\ \hline 3262 \\ \small{1 \quad 1} \end{array}$$

3262

$$\frac{3}{4} \text{ of } 32$$

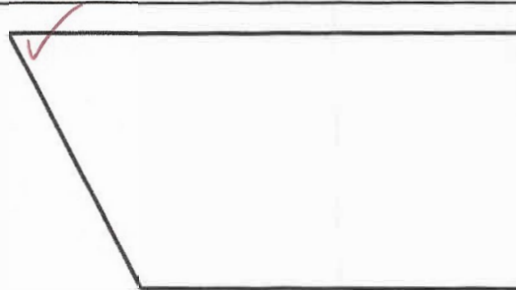
$$32 \div 4 = 8$$

$$8 \times 3 = 24$$

24

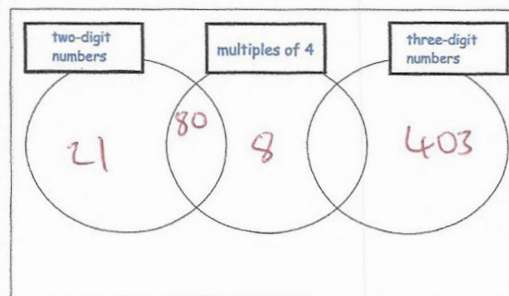
This shape has one acute angle

Tick the acute angle



Write each number in its correct place on the diagram

8 21 80 403



6cm



20cm

Work out the perimeter of the rectangle

$$20 + 20 + 6 + 6 = 52 \text{ cm}$$