

Name: _____

Primary 5-a-day

Gold



9th October

$$\frac{13}{4} = 3\frac{\square}{4}$$

$$\begin{array}{r} 89206 \\ -67317 \\ \hline \end{array}$$

- $\frac{1}{2}$ of the cars in a car park are red
- $\frac{1}{4}$ of the cars in the car park are blue



What fraction of the cars in the car park are red or blue?

The mass of a 2p coin is 7.1 grams. The mass of a 1p coin is half the mass of a 2p coin.



What is the total mass of these eight coins?

Here is a number written in Roman numerals

CXXXV

Write the number in figures

Name: _____

Primary 5-a-day

Gold



9th October

$$\frac{13}{4} = 3\frac{\square}{4}$$

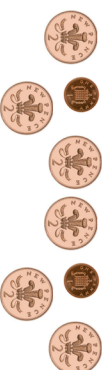
$$\begin{array}{r} 89206 \\ -67317 \\ \hline \end{array}$$

- $\frac{1}{2}$ of the cars in a car park are red
- $\frac{1}{4}$ of the cars in the car park are blue



What fraction of the cars in the car park are red or blue?

The mass of a 2p coin is 7.1 grams. The mass of a 1p coin is half the mass of a 2p coin.



What is the total mass of these eight coins?

Here is a number written in Roman numerals

CXXXV

Write the number in figures