



13th July

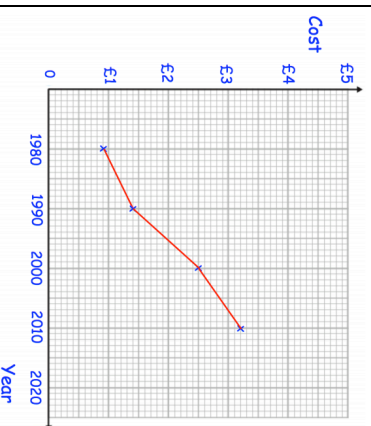
$$35\% = \frac{\square}{\square}$$

$$90 - 240$$

Work out the value of y

$$4y - 7 = 2y + 15$$

The line graph below shows the cost of a coffee in a shop over 30 years.



In which year was the price £2.50

Estimate the price of a coffee in 2010.



13th July

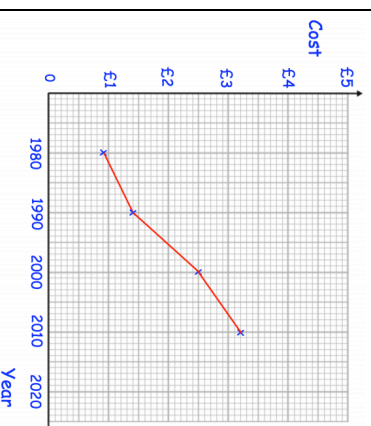
$$35\% = \frac{\square}{\square}$$

$$90 - 240$$

Work out the value of y

$$4y - 7 = 2y + 15$$

The line graph below shows the cost of a coffee in a shop over 30 years.



In which year was the price £2.50

Estimate the price of a coffee in 2010.