



22nd February

$$\frac{5}{8} - \frac{1}{3}$$

$$\frac{15}{24} - \frac{8}{24}$$

$$\frac{7}{24}$$

40% of 70

$$10\% = 7$$

$$7 \times 4 = 28$$

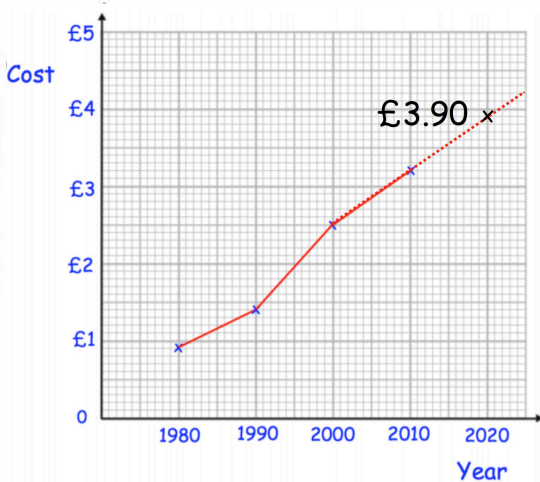
$$28$$

Write 0.375 as a fraction.
Give your answer in its simplest form.

$$\frac{3}{8}$$

$$\frac{375}{1000} = \frac{75}{200} = \frac{15}{40} = \frac{3}{8}$$

The line graph below shows the cost of a coffee in a shop over 30 years.



In which year was the price £2.50

2000

Estimate the price of a coffee in 2020.

£3.90