



**1st September**

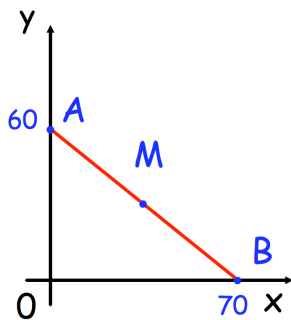
$$\frac{5}{9} \times \frac{1}{4}$$

$$521 \times 128$$

Circle any fraction that is greater than

$$\frac{1}{3} \text{ but less than } \frac{1}{2}$$

$$\frac{4}{9} \quad \frac{3}{5} \quad \frac{13}{20} \quad \frac{5}{8} \quad \frac{7}{10}$$



In this diagram M is an equal distance from A and B.

What are the coordinates of M?

A 10p coin has a diameter of 24.5mm

Caitlyn makes a straight line of 10p coins worth £20



How long is the line?

Give your answer in metres.