

Name: _____

Primary 5-a-day

Gold



18th April

$$0.6 \div 10$$

0.06

$$\frac{2}{5} + \frac{3}{10}$$

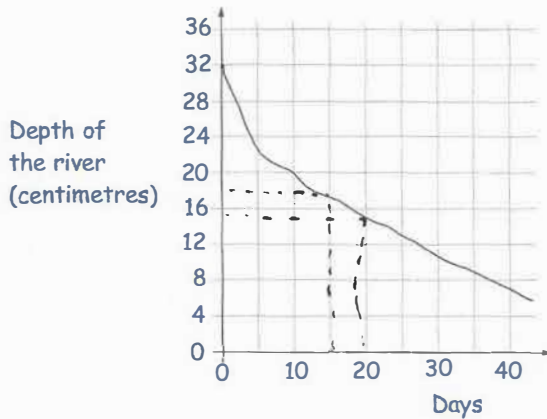
$$\frac{4}{10} + \frac{3}{10} =$$

$\frac{7}{10}$

Write the number that is four less than one million in figures

999,996

This graph shows the depth of a river during the summer



What is the depth of the river after 15 days?

17cm

How long does it take the river to go from a depth of 32cm to 15cm?

32 after 0 days
15 after 20 days